

Overview

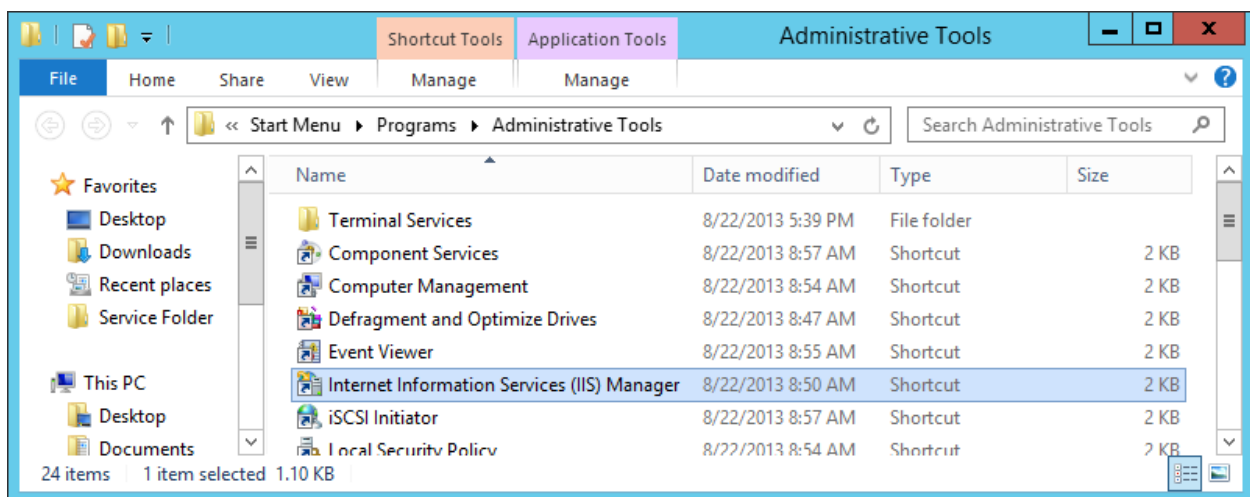
Pulseway RESTful API allows users to create Pulseway instances from computer code or scripts. This component is also available to all Enterprise Server customers however; it must be manually installed prior use.

Requirements

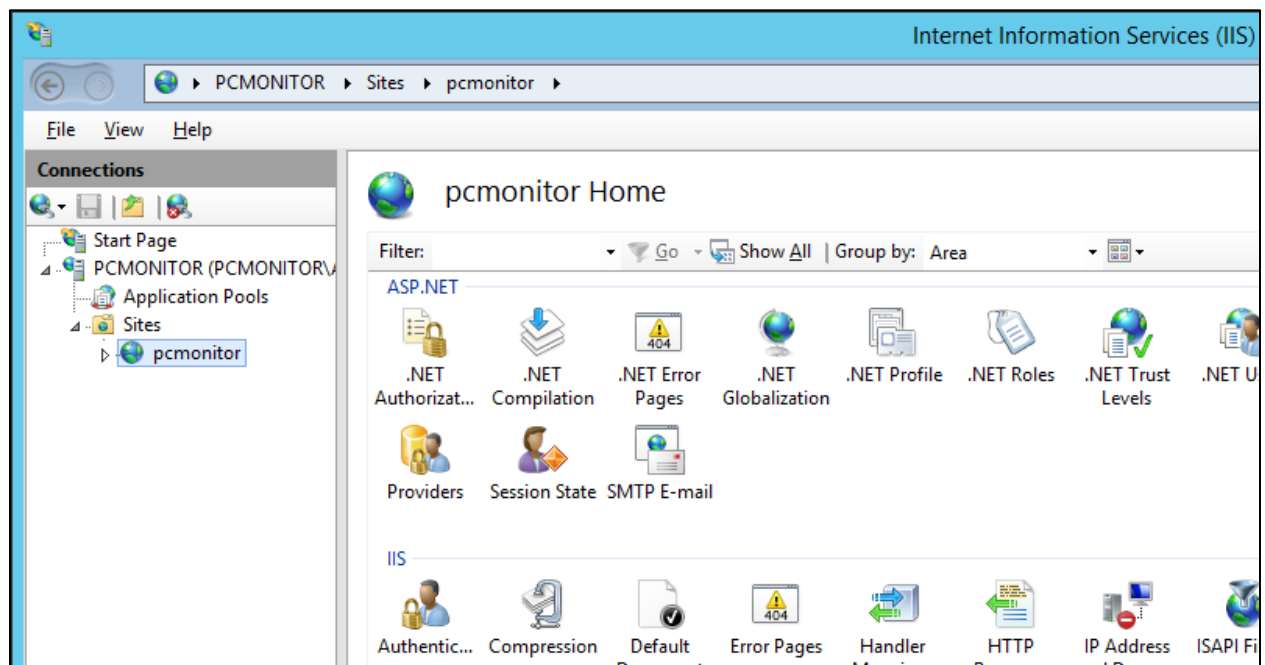
Pulseway Enterprise Server version 142 or higher (Check from Pulseway Admin -> License and Administration tab -> License tab).

IIS Installation

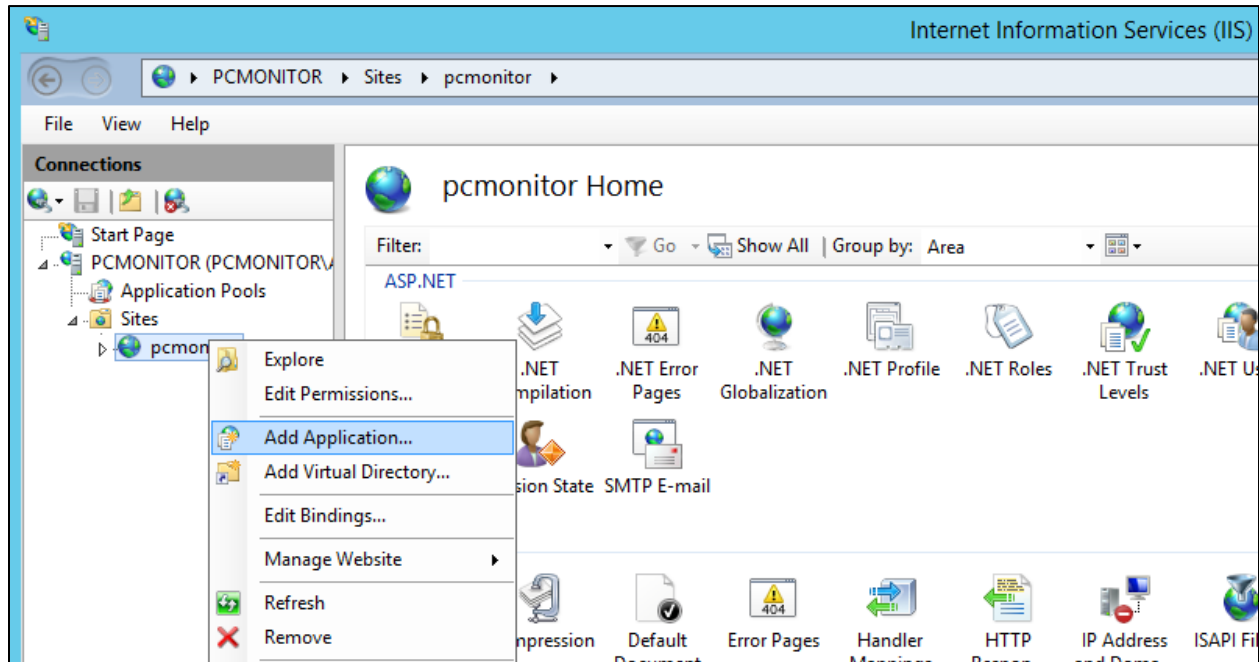
1. Open IIS Manager on your Pulseway Enterprise server:



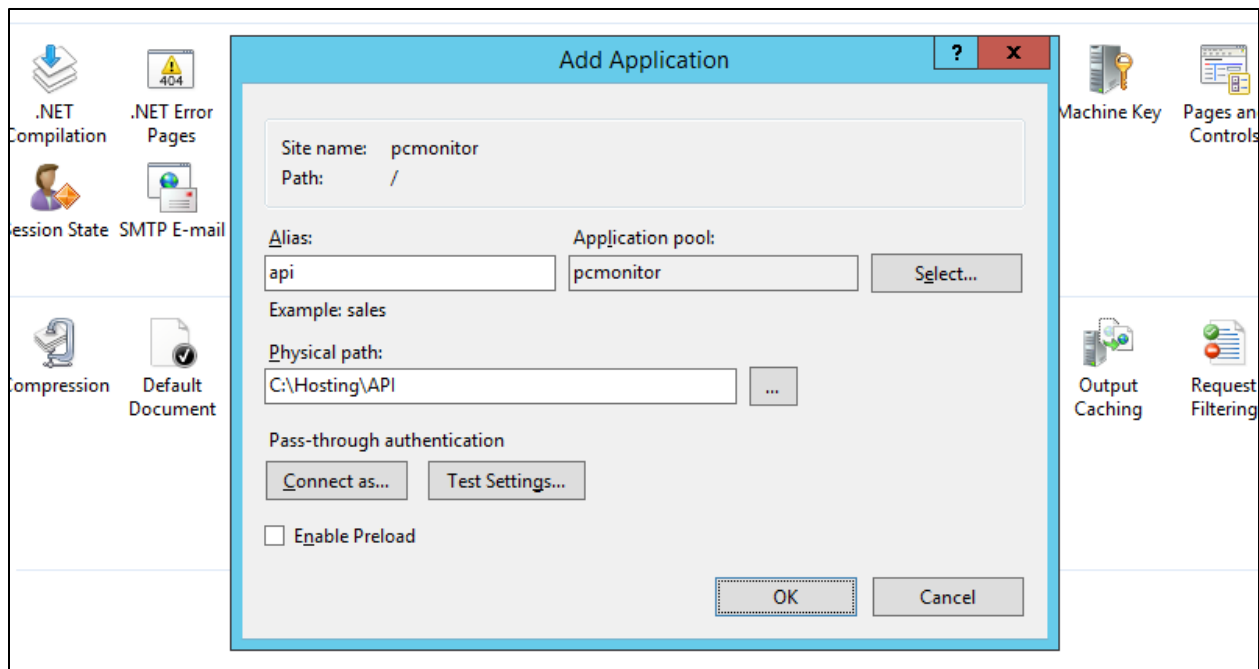
2. Select the "pcmonitor" IIS Site:



3. Right click the previously selected IIS Site and select the “Add Application” option:



4. Set the “Alias” field to “api” and the “Physical path” to “C:\Hosting\API” then press OK.



Review

Once the RESTful API is installed, your clients can use it right away. No system restart is required. Communicate your clients that the API endpoint for your server is: [https://<server_name>/api \(/version/method\)](https://<server_name>/api(/version/method)).

